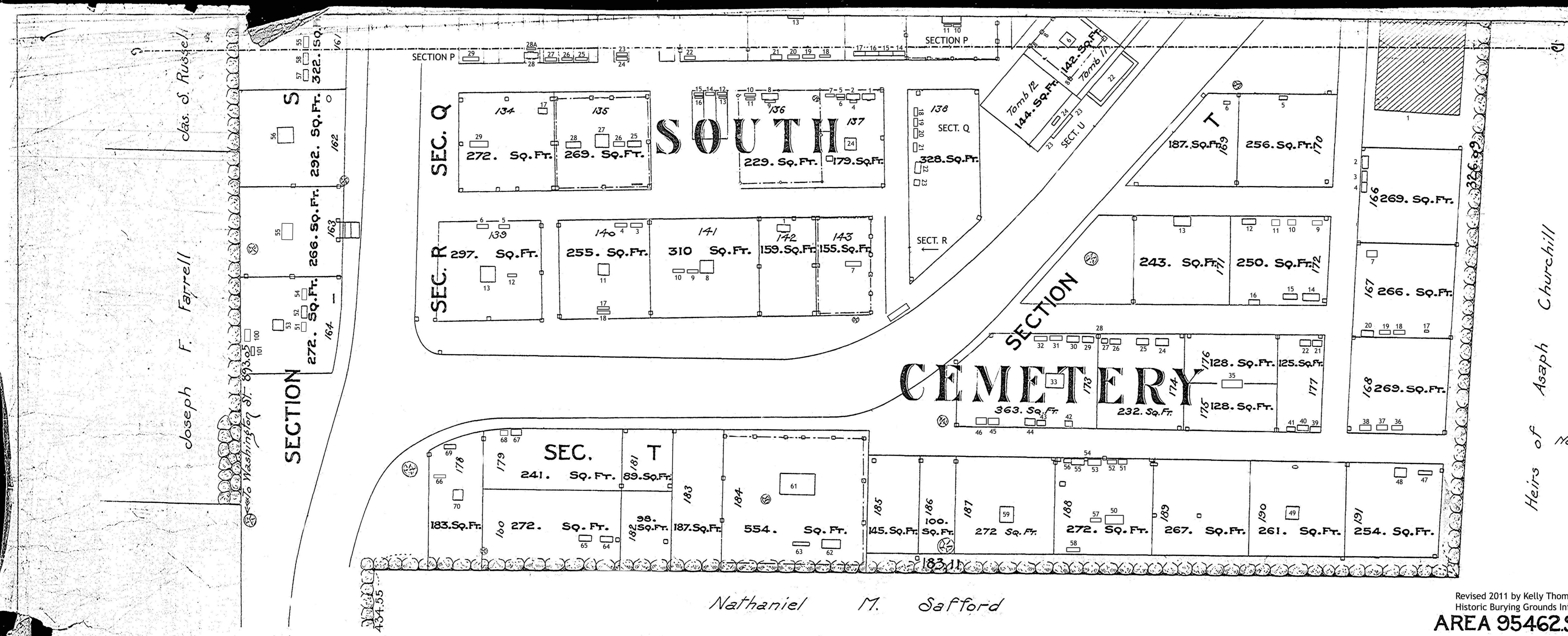


# Part I

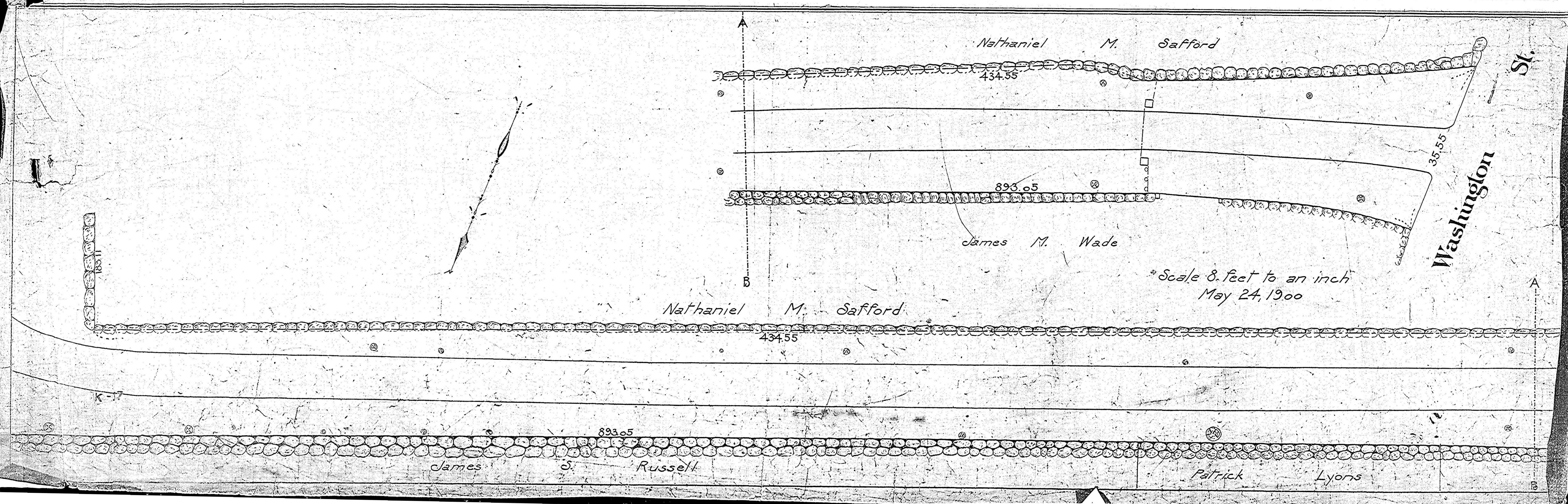


Heirs of Asaph Churchill

Note: - Large figures denote Lot numbers  
 Figures within circles denote graves without headstones  
 Small figures denote graves with headstones

CITY OF BOSTON  
**SOUTH CEMETERY**  
 DORCHESTER  
 May 24, 1900  
*William Jackson*  
 City Engineer

Revised 2011 by Kelly Thomas,  
 Historic Burying Grounds Initiative  
**AREA 95462.Sq.Ft.**



Scale 8 feet to an inch  
 May 24, 1900