

PWOJÈ RESTORASYON FORÈ SOVAJ IBEN MATTAHUNT WOODS

Jounen Pòt Ouvè Kominotè #1
2 me 2023

KONSÈY ZOOM - ENTÈPRETASYON

Spanish and Haitian Creole interpretation is available for this meeting. Please select your preferred language option at the bottom of the screen by clicking on the globe symbol. Click “Mute Original Audio to silence other languages.” Visit the project website to download the presentation in your preferred language!

NOTE: EVERYONE MUST SELECT A LANGUAGE. REMEMBER TO SPEAK SLOWLY!

Se dispone de interpretación en español y criollo haitiano para esta reunión. Seleccione la opción de idioma de preferencia en la parte inferior de la pantalla haciendo clic en el símbolo del globo terráqueo. Haga clic en “Silenciar audio original para silenciar otros idiomas”. Visite el sitio web del proyecto para descargar la presentación en su idioma de preferencia.

NOTA: TODOS DEBEN SELECCIONAR UN IDIOMA. ¡RECUERDE HABLAR LENTAMENTE!

Entèpretasyon va disponib pou lang panyòl ak kreyòl ayisyen nan reyinyon sa a. Tanpri chwazi opsyon lang prefere w pa anba ekran an pandan w ap klike sou senbòl (an ron) glòb la. Klike sou "Mute Original Audio" (Fèmen odyo lang orijinal yo) pou w pa tande lòt lang yo." Vizite sitwèb pwojè a pou telechaje prezantasyon an nan lang prefere w la!

SONJE: TOUT MOUN DWE CHWAZI YON LANG. SONJE POU PALE TOU DOUSMAN!



KONSÈY ZOOM - PATISIPASYON NAN REYINYON

Men kèlke konsèy pou moun kap itilize Zoom pou premye fwa yo. Kontwòl ou yo pa anba ekran an:



Y ap fèmen mikwo patisipan yo pandan prezantasyon an.

Fasilitatè ap louvri mikwo w pandan diskisyon an si w leve men w epi se tou pa w pou pale.



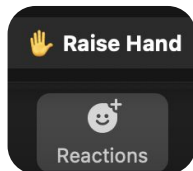
Klike bouton videyo a pou ouvri oswa fèmen videyo w.

Si w fè fas ak pwoblèm koneksyon oswa band pasant, fèmen videyo a kapab ede w.



Sèvi ak tchat la pou tape yon kòmantè oswa poze yon kesyon a nenpòt ki moman.

Manm Ekip Pwojè a pral modere tchat la.



Pou leve men w klike sou "Reactions" (Reyaksyon) pa anba ekran an, epi chwazi "Raise Hand." (Leve Men)

Sèvi ak *9 (etwal 9) pou leve menm sou telefòn.

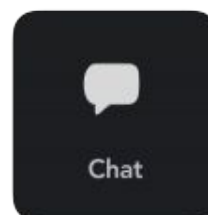
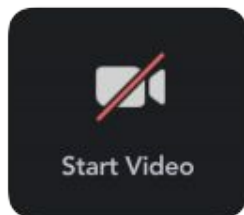
KONSÈY ZOOM - ANREJISTREMAN REYINYON

Sou demann manm kominote yo, y ap anrejistre evènman sa a epi poste li sou paj wèb pwojè a pou sila yo ki pa kapab asiste evènman Zoom sa a an dirèk

boston.gov/improvements-mattahunt-woods

Si w pa swete nan anrejistremman an pandan reyinyon an, tanpri fèmen mikwo w ak kamera w.

Si kamera w ak mikwo w fèmen, w ap toujou ka patisipe gras ak fonksyonalite tchat la.



AJANDA REYINYON AN

- **Entwodiksyon**
- **Kontèks Pwojè a**
- **Repons Sondaj Yo**
- **Kondisyon ki Egziste yo**
- **Premye Rekòmandasyon Sit yo**
- **Diskisyon ak Fidbak**
- **Pwochen Etap yo**



A blue-tinted photograph of a forest path. The path is dirt and covered with fallen leaves and branches, leading into a dense forest of tall, thin trees. The lighting is soft, suggesting a dappled sunlight effect. The overall mood is serene and natural.

ENTWODIKSYON

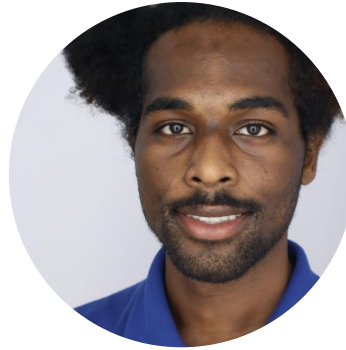
EKIP PWOJÈ A - ANPLWAYE VIL LA



Cat McCandless



Elena Itameri



Christopher Edwards



Paul Sutton



Nick Long

*Climate Resilience
Project Manager*

*Conservation Commission
Executive Director*

*Conservation Commission
Fellow*

*Urban Wilds
Program Manager*

*Urban Wilds
Foreman*



City of Boston
Environment



City of Boston
Parks and Recreation

EKIP PWOJÈ A - CROWLEY COTTRELL LANDSCAPE ARCHITECTURE



Michelle Crowley

*Principal
Crowley Cottrell*



**Jean-Paul
Charboneau**

*Associate
Crowley Cottrell*



Anna Curtis Heald

*Designer
Crowley Cottrell*



CROWLEY COTTRELL

Landscape Architecture

A blue-tinted photograph of a forest path. The path is dirt and leads into a dense forest of tall, thin trees. The ground is covered with fallen leaves and branches. The text 'PWOGRAM FORÈ SOVAJ IBEN' is overlaid in white, bold, sans-serif font across the center of the image.

PWOGRAM FORÈ SOVAJ IBEN

URBAN WILDS PROGRAM

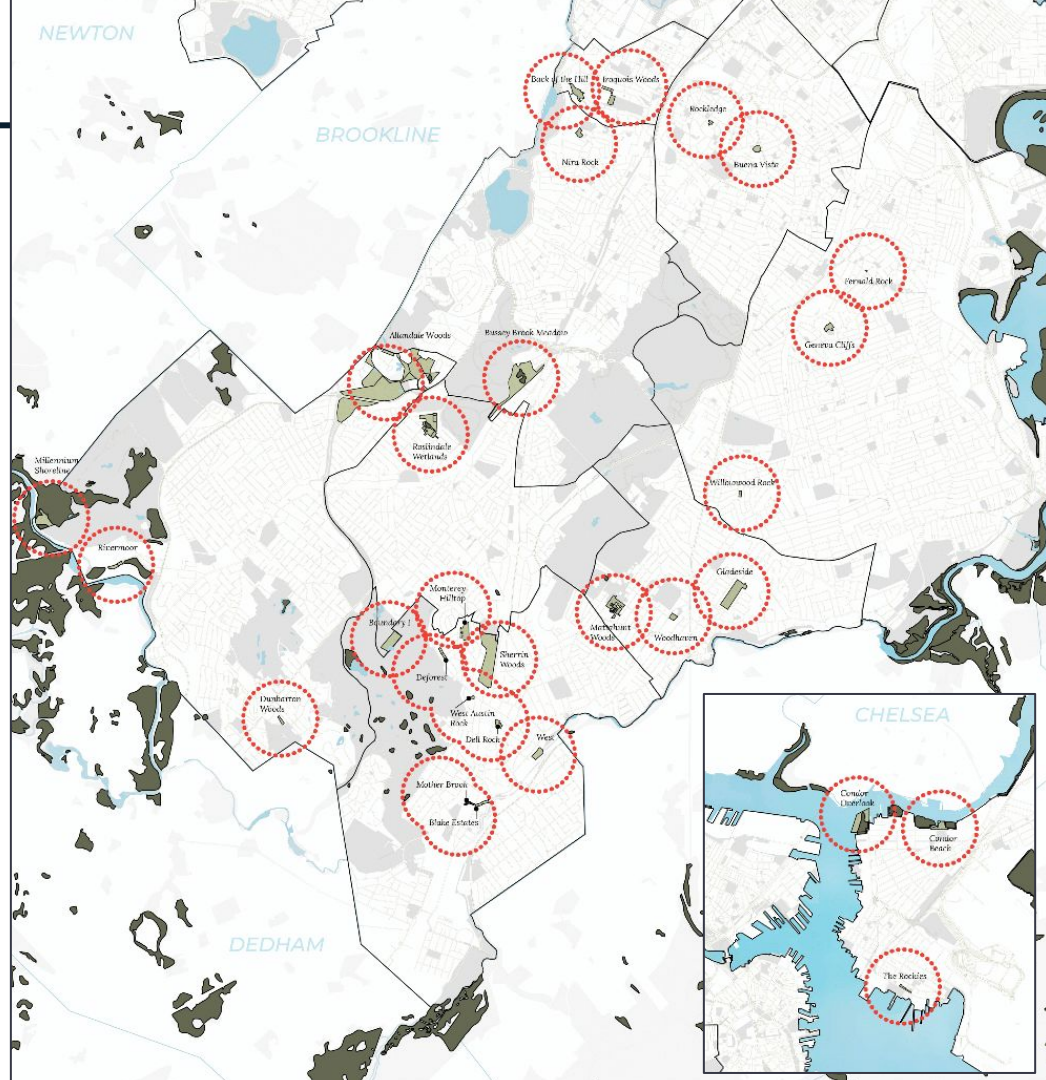
Vil Boston ap jere epi pran swen **29 forè sovaj iben** atravè katye Boston yo ki gen yon **total 176 ekta (kawo tè)**.

Forè sovaj iben yo se pou Komisyon Konsèvasyon Boston yo ye e se Pwogram Depatman Pak Forè Sovaj Iben k ap jere yo.

Forè sovaj iben sa yo ofri yon espas natirèl pou rekreyasyon pasif epi yo sèvi kòm salklas ekstèn pou timoun ak granmoun pou aprann sou lanati. Yo bay abita tou pou plant ak zannimo (bèt) natif.

Forè sovaj iben ofri anpil avantaj pou anviwònman an, tankou:

- estokaj dlo lapli;
- filtraj dlo lapli;
- pwodui oksijèn;
- amelyorasyon kalite lè a; ak
- diminye efè "zile chalè iben" an.



NAN KI FASON YON FORÈ SOVAJ IBEN DIFERAN DE YON PAK?

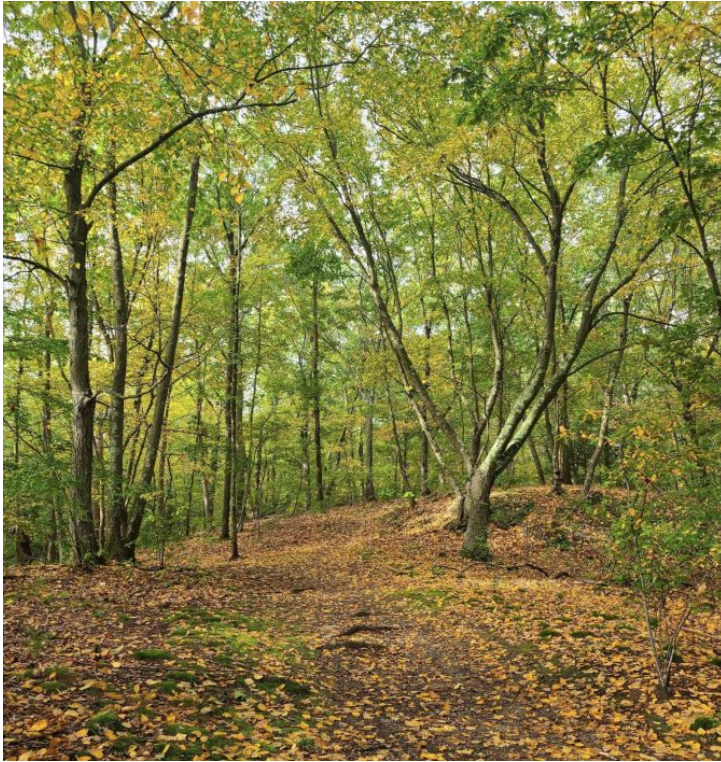


Example: Hunt Almont Park in Mattapan

Pak

- Ka pran plizyè fòm (rekreyasyon aktif parapò ak rekreyasyon pasif)
- Gendwa petèt akomode diferan kalite itilizasyon (kous djoging, espas pou jwe/ lakou rekreyasyon, teren atletik, plas piblik, elatriye.)
- Kapab pèmèt yon pakèt evènman ak pwogram (foir, evènman kiltirèl, mizik, pwogram kondisyon fizik, teyat)
- Dwe konfòme li ak estanda Ak (nòm Lwa) Ameriken sou Enfimite pou aksè Andikape ak aksesibilite
- Li ka genyen ladann sistèm elektrik, plonbri ak irigasyon

HOW DOES AN URBAN WILD DIFFER FROM A PARK?



Example: Allandale Woods Urban Wild in Jamaica Plain

Forè Sovaj Iben

- Montre karakteristik natirèl Boston yo tankou rivyè, etan, forè/rakbwa, tè imid/marekaj, preri/savann, twou gwo wòch, elatriye, epi sipòte plant ak abita bèt sovaj
- Li pèmèt sèlman pou rekreyasyon pasif (mache/randone/obsèvasyon lanati), edikasyon anviwònmantal, ak itilizasyon konsèvasyon
- Tipikman li pa enkòpore limyè/ekleraj ak elektrisite

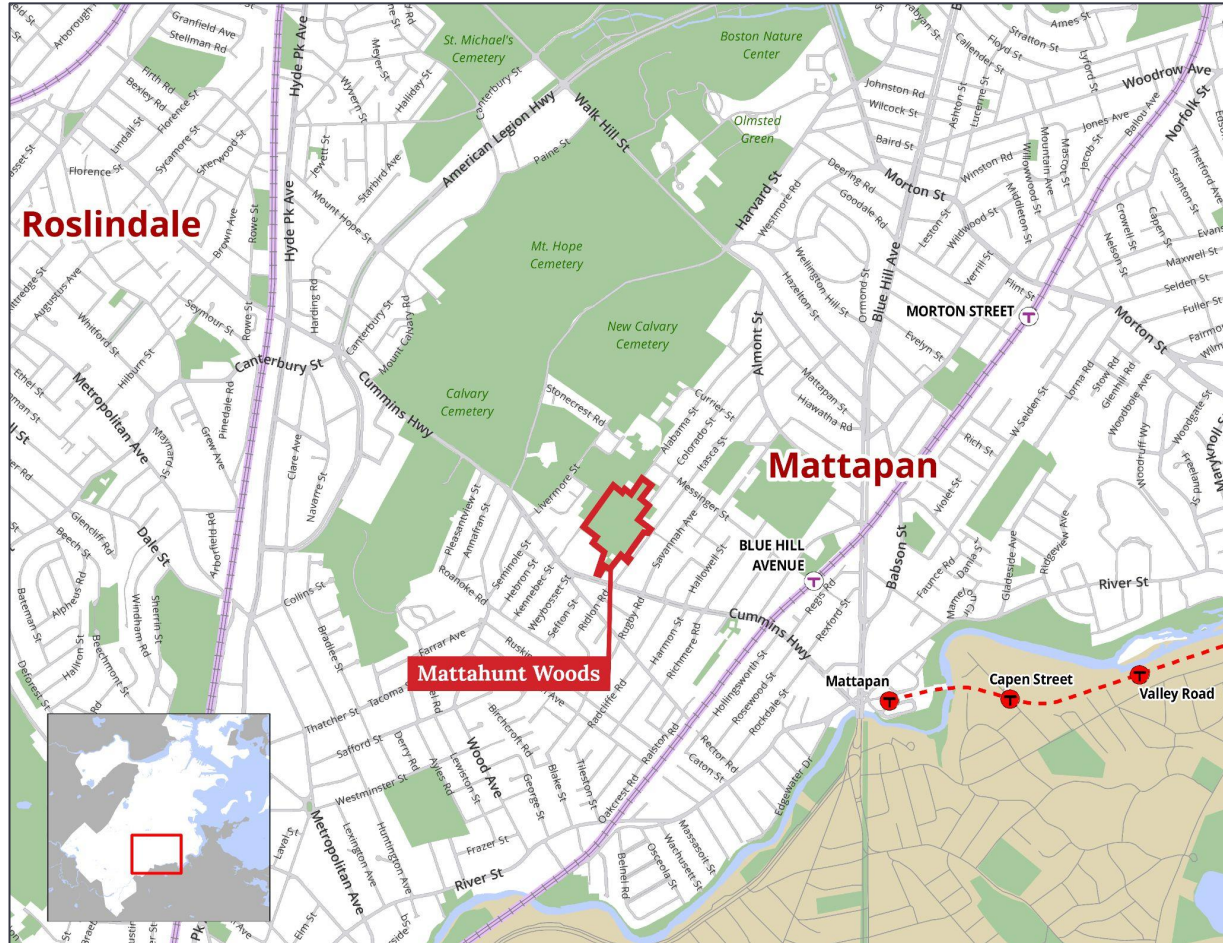
SOVAJ IBEN MATTAHUNT WOODS ISTWA

Espas Forè Sovaj Iben Mattahunt Woods te vin anba **pwoteksyon pèmanan** an 2008 gras ak petisyon yon sitwayen.

Mattahunt Woods genyen ladann 8 ¼ kawo tè nan marekaj forè izole nan Mattapan.

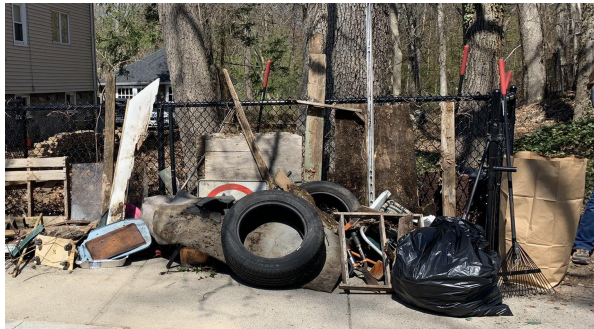
Te gen yon pwojè netwayaj ki te fèt an 2009 pou retire debri konstwiksyon.

An 2011 Asosyasyon Konsèvasyon Etidyan te kreye yon pakou ki konekte Ri Itasca ak entèseksyon Ri Canaan ak Ri Colorado.



SOVAJ IBEN MATTAHUNT WOODS JODI A

Jodi a, genyen yon pati Mattahunt Woods ki genyen ladann debri konstwiksyon, pyès machin, ak plant anvayisan, men toujou genyen kominote bon plant ak tè imid/marekaj.

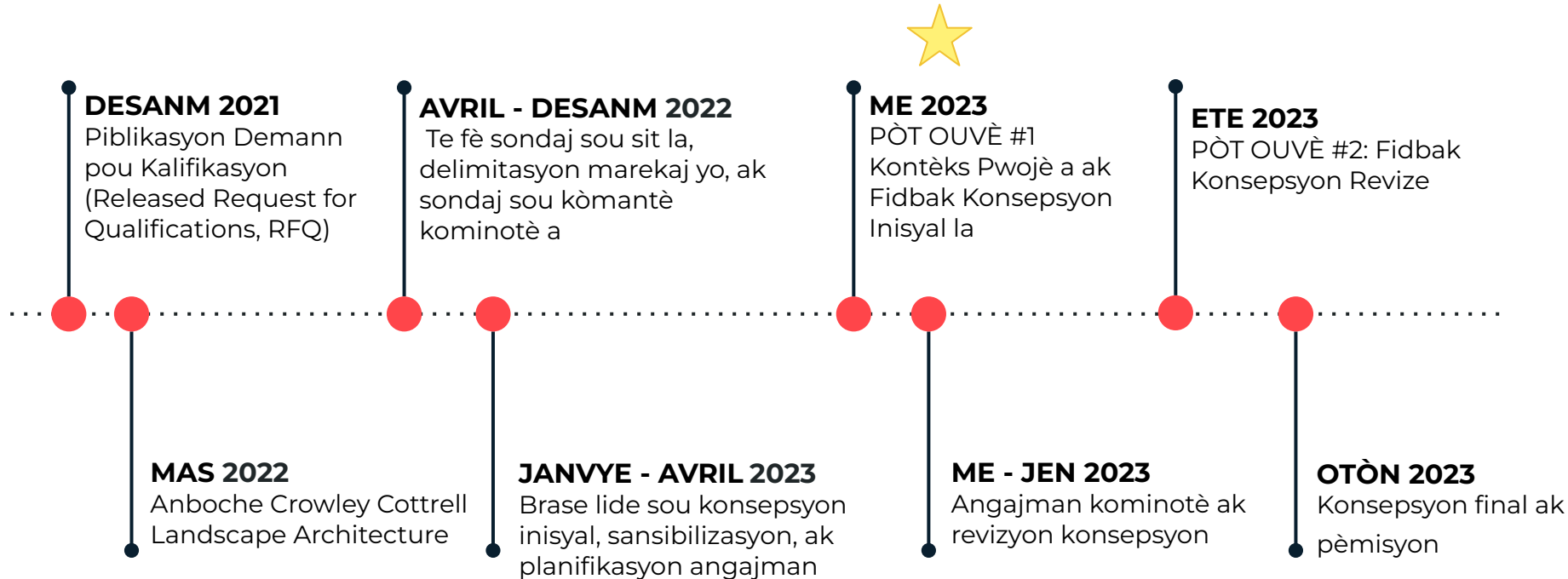


OBJEKTIF PWOJÈ A

- Retire pye bwa ki danjere ak espès anvayisan yo
- Prezève ak amelyore tè imid/marekaj sou plas yo
- Krewe yon sistèm pakou/santye atravè pwopriyete a
- Amelyore aksè nan sit la ak direksyon/sistèm siyalizasyon an
- Amelyore koneksyon pwopriyete a ak Lekòl Elemantè Mattahunt (Mattahunt Elementary School) ki tou pre a



KALANDRIYE PWOJÈ A

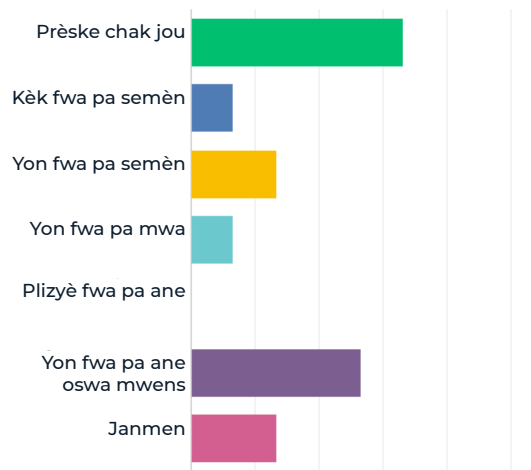


A blue-tinted photograph of a forest path. The path is dirt and covered with fallen leaves and branches, leading into a dense forest of tall, thin trees. The text 'REPONS SONDAJ YO' is overlaid in white, bold, sans-serif font in the center of the image.

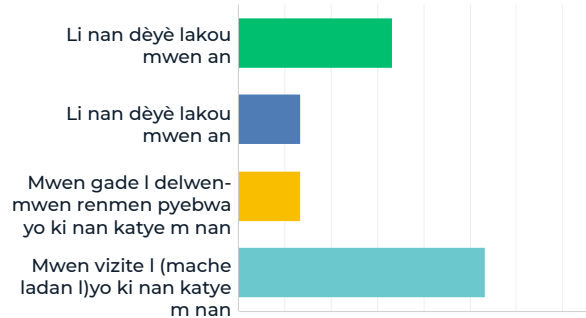
REPONS SONDAJ YO

REPONS SONDAJ YO

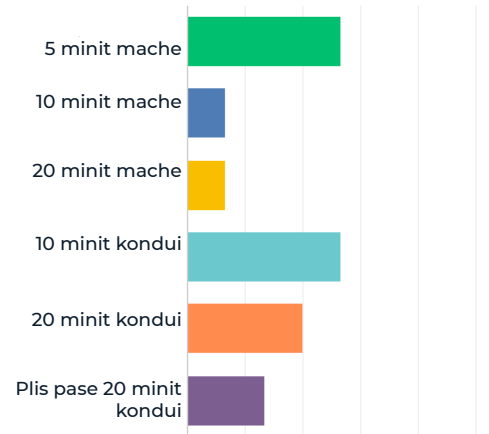
Chak kilè ou vizite Mattahunt Woods?



Nan ki pwoksimite w ye pa rapò ak Mattahunt Woods?

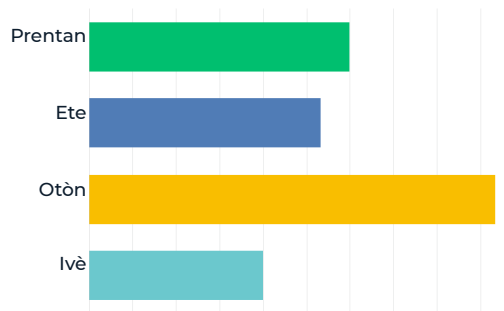


A ki distans ke ou rete (wap viv) de Mattahunt Woods?

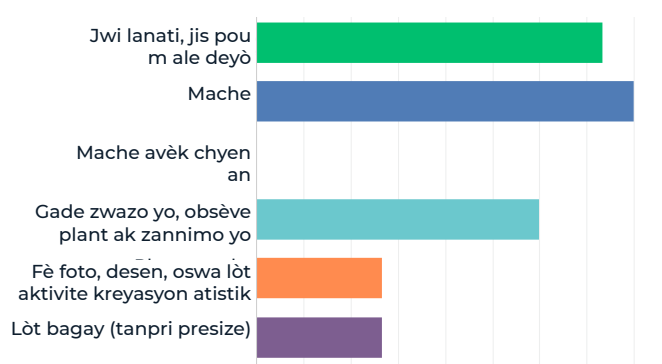


REPONS SONDAJ YO

Ki lè nan ane a ou vizite
Mattahunt Woods?

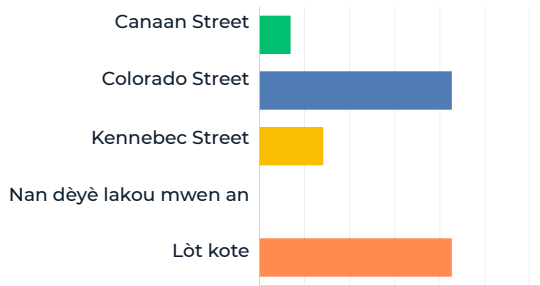


Nan ki aktivite ou konn patisipe lè ou ale
nan Mattahunt Woods?

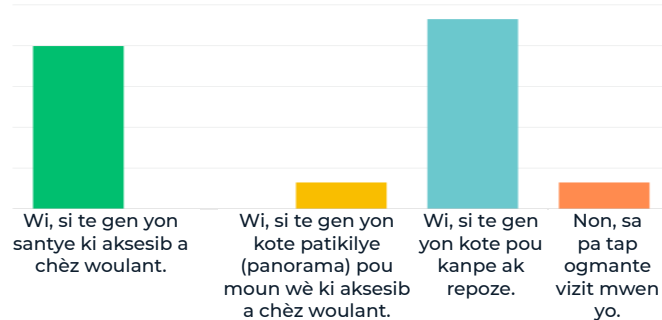


REPONS SONDAJ YO

Anjeneral pa ki kote ou konn pase pou antre nan Mattahunt Woods?



Èske ou menm oswa yon manm fanmi w tap vizite Mattahunt Woods pi souvan si li te aksesib pou moun ki sou chèz woulant oswa ki gen yon andikap (infim)?



REPONS SONDAJ YO

Ki plant oswa zannimo ou te obsève nan Mattahunt Woods?



Ekirèy



Kodenn



Koyòt



Sèf



Zwazo ble



Chipmunks



Pye bwa ak touf

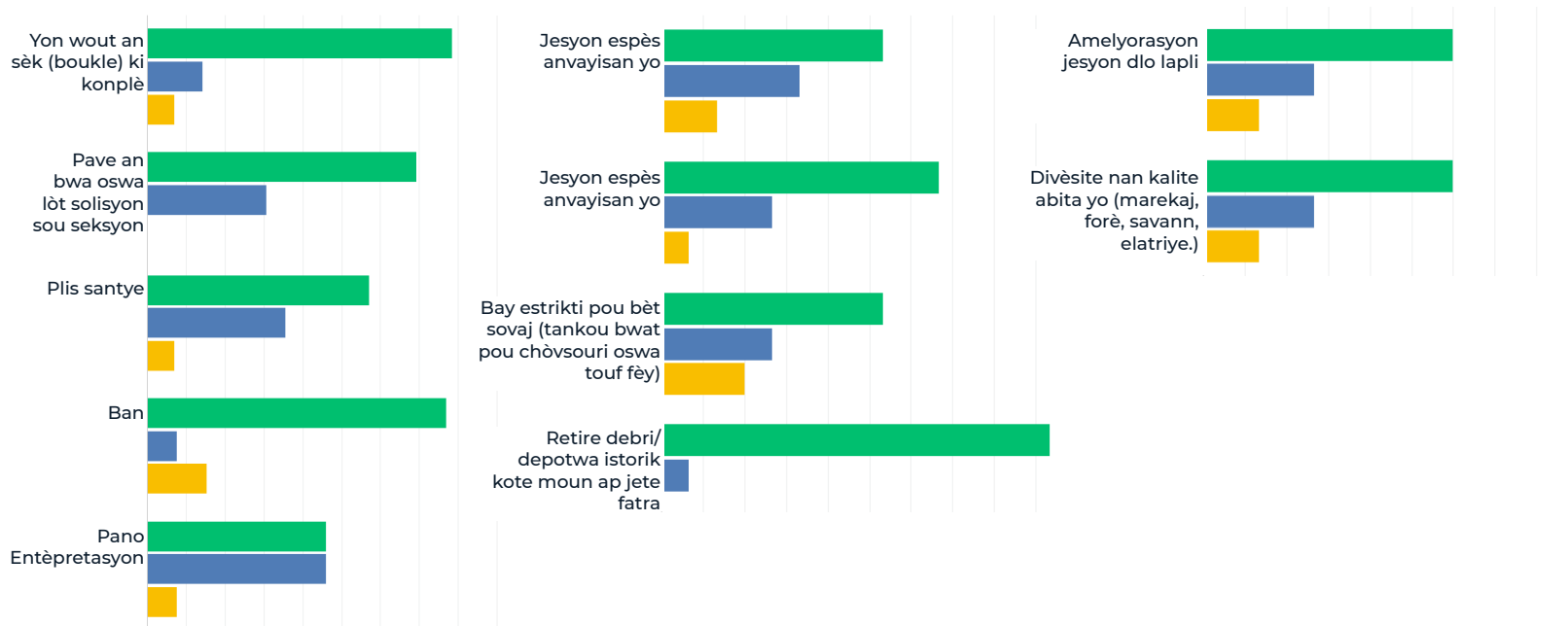


Raton

REPONS SONDAJ YO

Kisa ki ta ka amelyore eksperyans ou nan Mattahunt Woods?

- ta amelyore anpil
- ta yon ti jan amelyore
- pa ta amelyore



REPONS SONDAJ YO

Ki zòn ou pi renmen nan Mattahunt Woods?

Sikui lanatip **Pakou**
Espas natirèl ak vejetasyon natif natal
Pakou Wòch Pyebwa

Ki jan Mattahunt Woods pote valè a kominote w la?

Bon espas pou timoun
Rediksyon van **Lanati**
Bon espas pou etidyan
Atraksyon pou vizitè Espas ouvè
Forè Esansyèl Inondasyon, refwadisman, espas natirèl
Lanati ak peyizaj agreyab

Kòm a kisa (ki jan) ou menm ak zanmi/fanmi/
vwazen ou fè referans a Mattahunt Woods?

Mattahunt Woods **Forè a**
Mattahunt Urban Wilds
Forè ki nan do Mattahunt Elementary



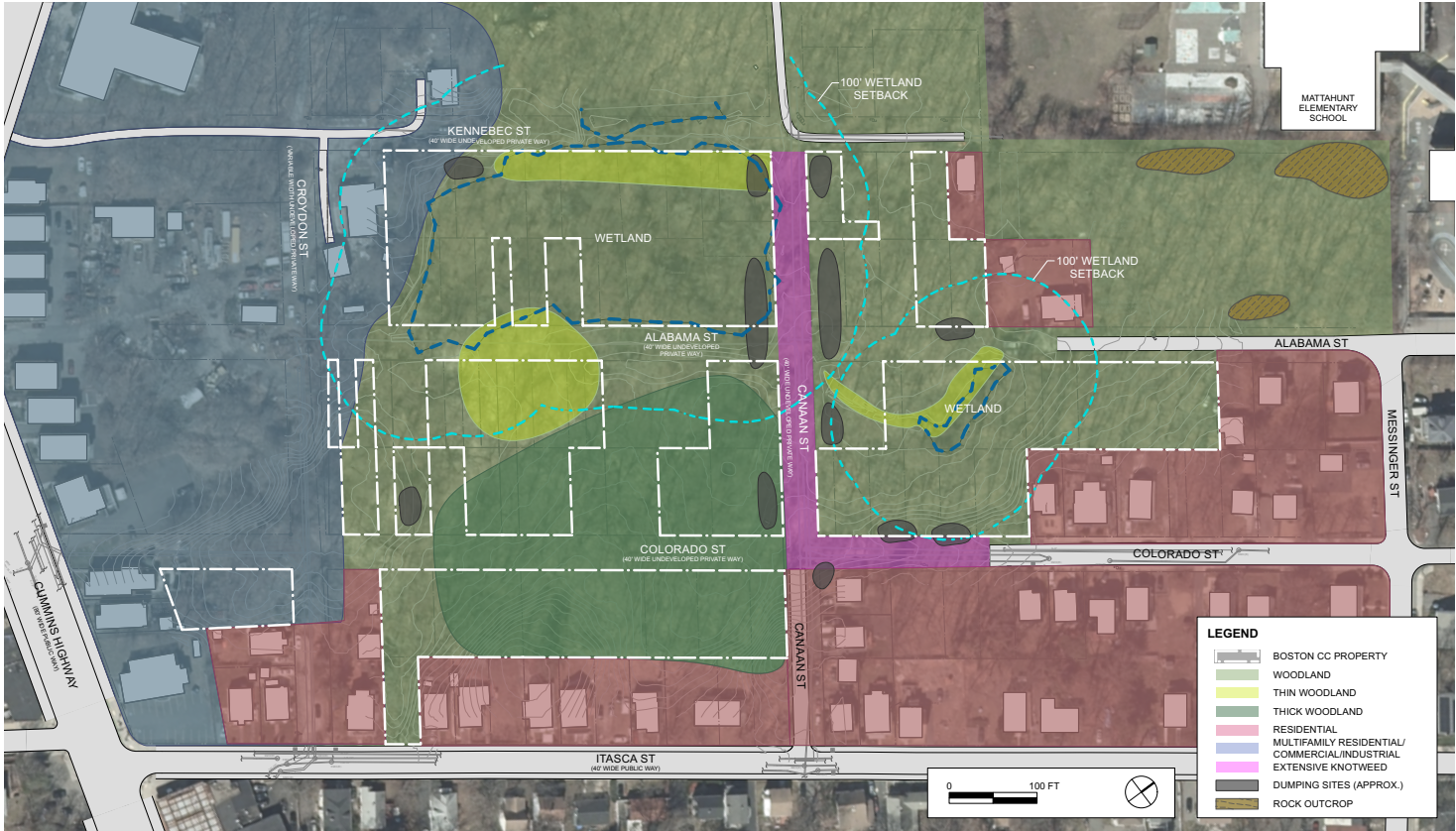
A blue-tinted photograph of a forest path. The path is made of dirt and is surrounded by many trees and green foliage. The text "KONDISYON KI EGZISTE YO" is overlaid in white, bold, uppercase letters across the center of the image.

KONDISYON KI EGZISTE YO

KONEKSYON MATTAHUNT WOOD AK KATYE A



FORÈ SOVAJ IBEN MATTAHUNT WOODS



KARAKTÈ SIT LA POU PREZÈVE AK AMELYORE



Rakbwa louvri



Ti twou



Affleurements wòch



"Pouding" wòch



"Pouding" wòch



Marekaj



Chanèl wòch



Marekaj

DEBRI SIT LA POU RETIRE



PLANT NATIF NATAL POU SIPÒTE



Clethra alnifolia - Summersweet



Arisaema triphyllum - Jack in the Pulpit



Cornus amomum - Silky Dogwood



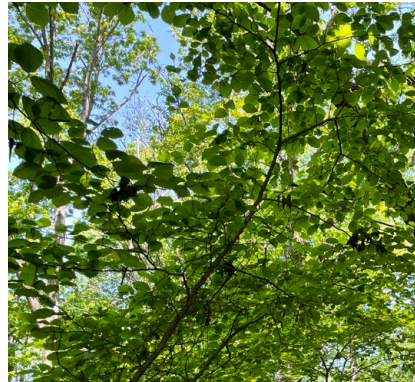
Symplocarpus foetidus - Skunk Cabbage



Smilax rotundifolia - Round-Leaved Greenbrier



Parthenocissus quinquefolia - Virginia Creeper

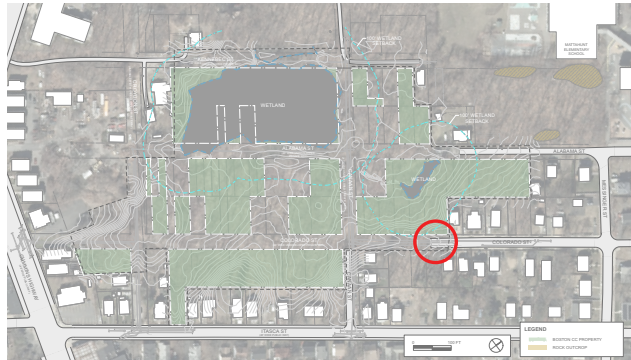


Hamamelis virginiana - Witch Hazel

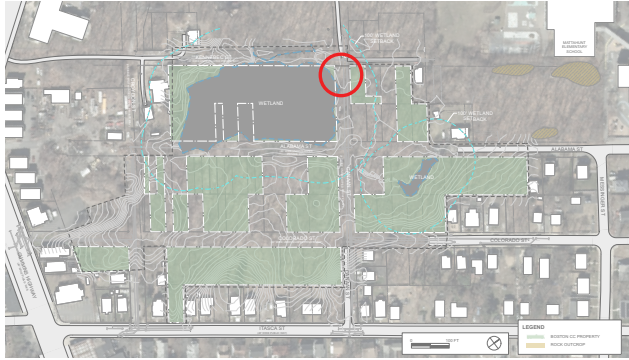


Sassafras albidum - Sassafras Tree

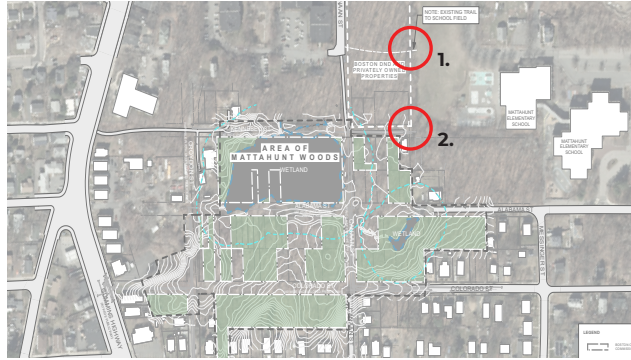
COLORADO STREET ANTRE (KI EGZISTE)



CANAAN STREET ANTRE LWÈS (KI EGZISTE)



MATTAHUNT ELEMENTARY ANTRE (KI EGZISTE)



1.

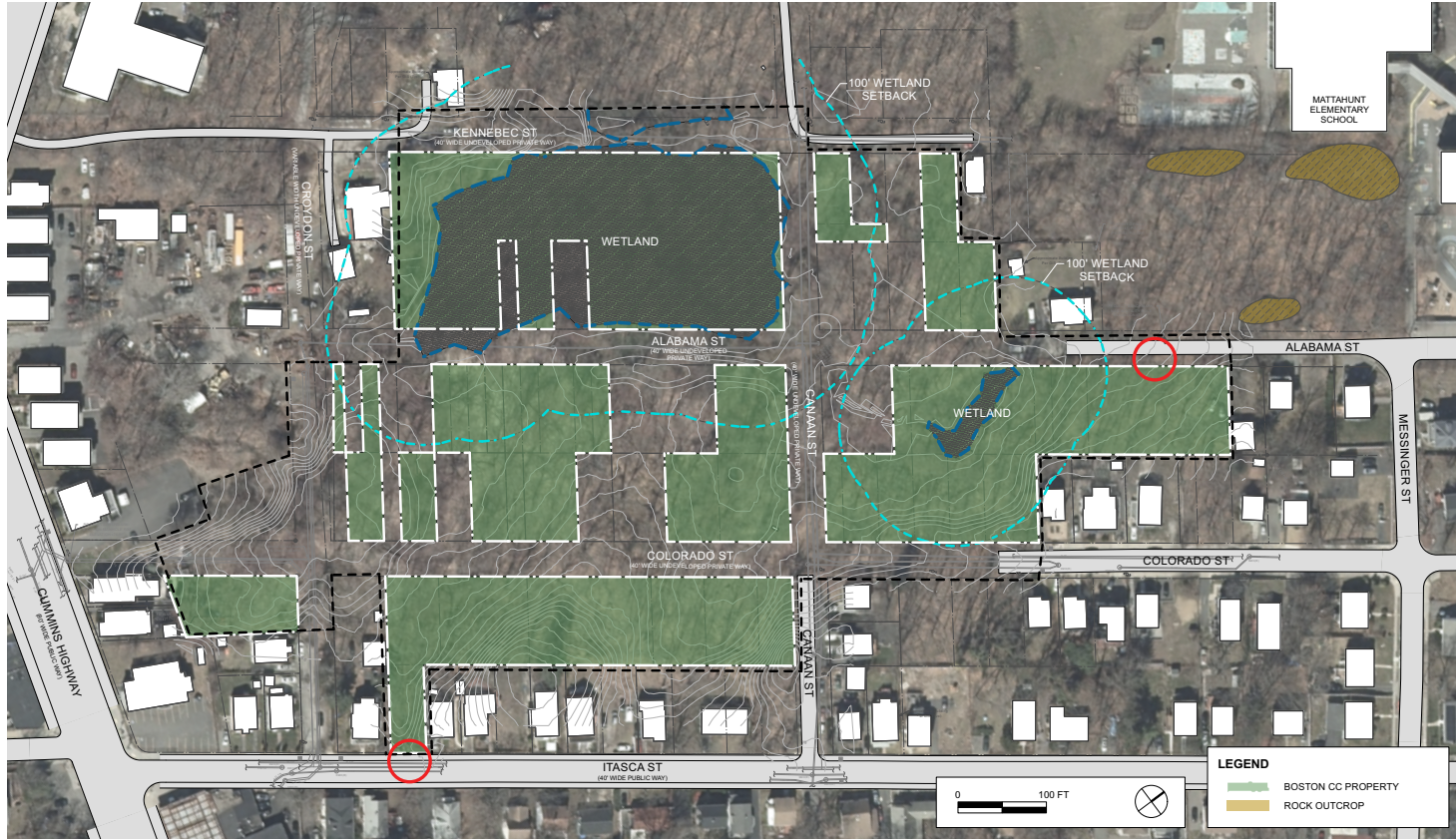


2.

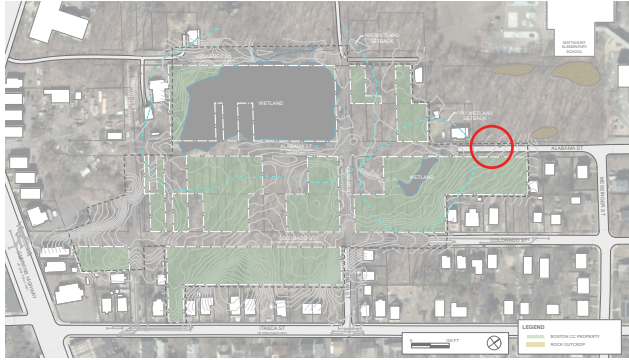
A blue-tinted photograph of a forest path. The path is dirt and leads into a dense forest of tall, thin trees. The ground is covered with fallen leaves and branches. The text "PREMYE REKÒMANDASYON SOU SIT LA" is overlaid in white, bold, sans-serif font across the middle of the image.

**PREMYE REKÒMANDASYON SOU
SIT LA**

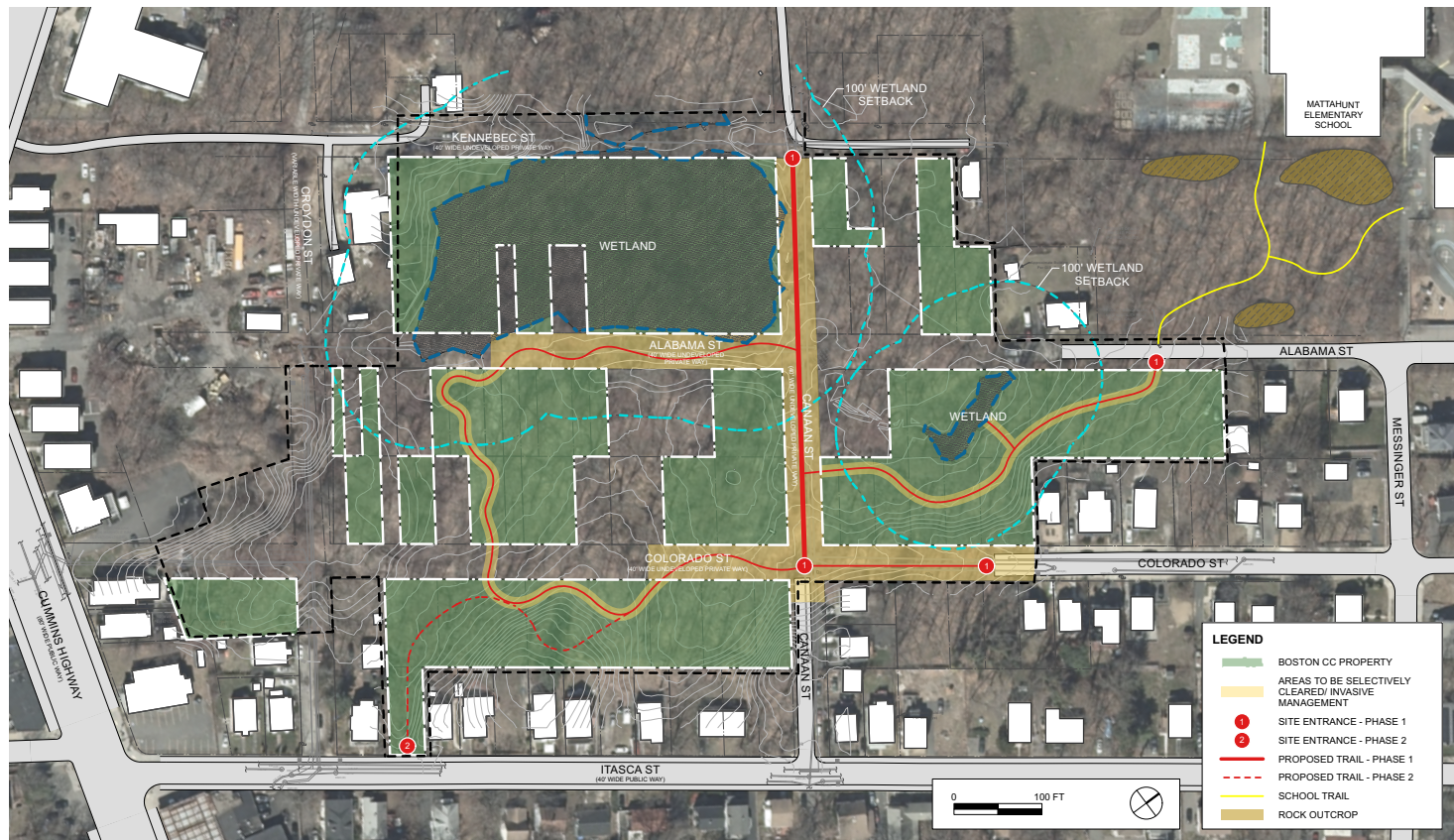
OPÒTINITE POU ANTRE



ALABAMA STREET ANTRE (OPÒTINITE)



OPÒTINITE TRAVAY PAKOU



IMAJ ENSPIRASYON



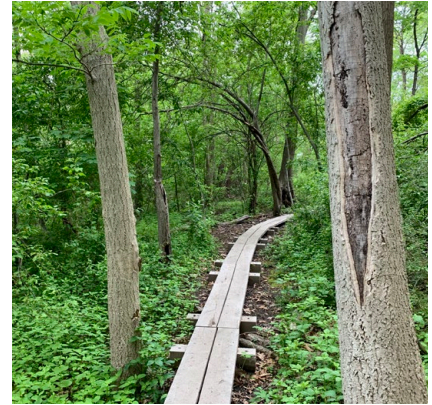
New Trails



Welcoming Entries & Places to Sit



Wayfinding and Interpretive Signage



Bog Bridges



Wetland Overlook



Boardwalks



Native Plant Establishment



Habitat Restoration

A blue-tinted photograph of a forest path. The path is dirt and leads into a dense forest of tall, thin trees. The ground is covered with fallen leaves and branches. The text 'KESYON DISKISYON' is overlaid in white, bold, sans-serif font in the center of the image.

KESYON DISKISYON

KESYON DISKISYON

- Ki opòtinite ou wè pou pwojè restorasyon sa a?
- Ki enkyetid ou genyen konsènan pwojè restorasyon sa a?
- Kisa w te renmen nan premye rekòmandasyon pou yon sistèm santye/ pakou a? Kisa w pa t renmen?
- Ki jan w panse ke yon sistèm aksè ak siyaj pou antre atravè Mattahunt Woods ta ka amelyore?
- Èske w gen plis opinyon ki pa t kaptire nan rezilta sondaj la ke w vle nou konnen?
- Ki lòt kesyon w genyen pou ekip pwojè a?

PWOCHEN ETAP YO

Mèkredi 10 me

Orè Biwo Vityèl 12:00 è - 1:00 è p.m.
Vizite sitwèb/entènèt pwojè a pou w enskri!

Samdi 20 me

Pwonmnad sou Sit Kominote a soti
10:00 è - 11 zè 30 a.m. Vizite sitwèb/
entènèt pwojè a pou plis enfòmasyon!

Jedi 9 jen

Ekip Pwojè a ap patisipe nan Mattapan
Coffee Hour (Orè Kafè) Majistra Wu soti
9è30 - 10è30 a.m.

Pòt Ouvè #2

Pou byento!

PLIS ENFÒMASYON:

Vizite boston.gov/improvements-mattahunt-woods pou telechaje prezantasyon sa a nan lang prefere w epi jwenn enfòmasyon sou pwojè a. Y ap poste yon anrejistreman reyinyon sa a nan jou k ap vini yo.

Vizite boston.gov/departments/environment#newsletter pou w ka enskri pou resevwa mizajou.

Kontakte Catherine nan catherine.mccandless2@boston.gov si w genyen nenpòt lòt kesyon oswa kòmantè anplis!



A blue-tinted photograph of a forest path. The path is dirt and leads into a dense forest of tall, thin trees. The ground is covered in leaves and fallen branches. The word "MESI!" is overlaid in white, bold, sans-serif font in the center of the image.

MESI!